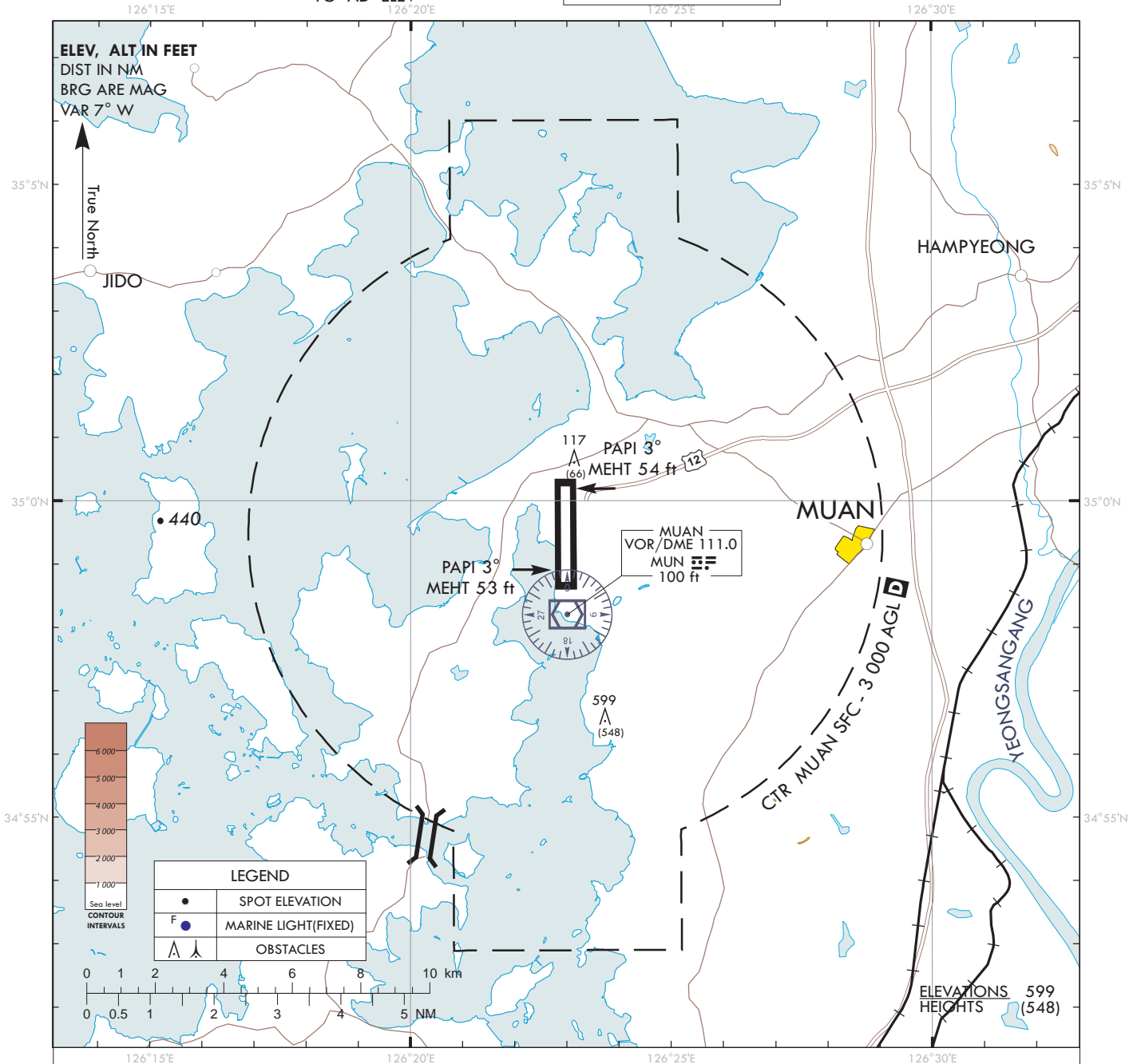


**VISUAL
APPROACH
CHART - ICAO**

AD ELEV 51 FT
HEIGHTS RELATED
TO AD ELEV

GWANGJU APP	130.0
MUAN TOWER	228.9
	118.25
	118.85

MUAN/Muan



VISUAL APPROACH PROCEDURE

1. Visual approach may be initiated by ATC or approved upon pilot request on traffic permitting basis when :
 - a. Ceiling : At or above 500 ft plus MVA
 - b. Visibility : Not less than 3 SM

2. ATS airspace : Class D(Refer to ENR 2.1-8)

